



MINERAL AREA COLLEGE

Client:
MINERAL AREA COLLEGE

Address:
PARK HILLS, MO
ACADEMIC HALL

CHANNEL LETTERS

Type:
Preformed Channel Letters
on Custom Raceway

Size: 36" TALL

Illumination:
Internally Illuminated LEDs

To Grade: N/A
Top of Sign to Grade = N/A
Bottom of Sign to Grade = N/A
Centered in area shown

This rendering is the property of Mineral Area College. It is for the exclusive use of Mineral Area College and the party which requested the rendering. It is an unpublished original drawing not to be distributed, reproduced or exhibited without the consent of Mineral Area College.



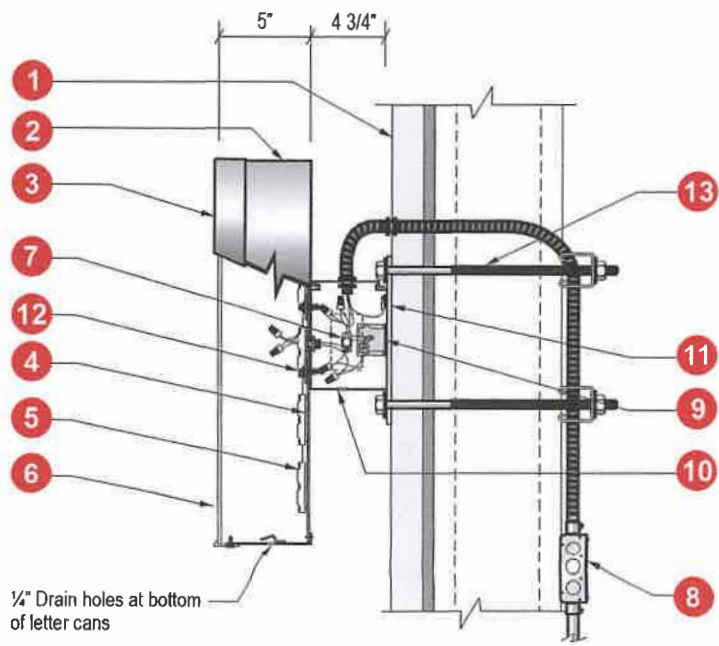
Date	Revisions	Initials

MINERAL AREA COLLEGE

36" TALL LETTERS IN 55.5" AREA



Sign Layout Detail



LED Channel Letter - Raceway

LED LIGHTING:
TRUE WHITE, 7100K
10 YEAR LIGHTING WARRANTY
5 YEAR LABOR WARRANTY

Lighting Detail

This sign is to be installed in accordance with the requirements of Article 600 of the National Electrical Code.

- 1) Grounded and bonded per NEC 600.7/NEC 250
- 2) Existing branch circuit in compliance with NEC 600.5, not to exceed 20 amps
- 3) Sign is to be UL listed per NEC 600.3
- 4) UL disconnect switch per NEC 600.6 - required per sign component before leaving manufacturer*

*For multiple signs, a disconnect is permitted but not required for each section.

Electrical Notes

1. Existing Facade: Stucco/Drivet
2. .040" black painted aluminum letter returns
3. 1" black trimcap bonded to face and #8 pan head screws to returns
4. 3mm ACM fastened to returns w/ 1/2" 18 gauge staples. Seal w/ VOC compliant 360 white latex caulk to prevent moisture penetration. (Interior of sign to be painted white for max illumination)
5. True White LEDs
6. 3/16" #7328 White Acrylic w/ applied vinyl to match Oracal 8500, 016 Crimson
7. Disconnect switch UL Outdoor rated toggle type with neoprene boot per NEC 600-6
8. Primary electrical feed in UL conduit / customer supplied UL junction box
9. LED drivers
10. .080 custom curved aluminum raceway painted to match facade
11. Aluminum mounting tabs welded to raceway - Max 6" from each end and every 48" o.c.
12. #12 x 1" TEC screws with 1 1/4" fender washers
13. 1/2" mounting bolts

Specifications: Channel Letters on a Raceway